

#### NOTICE

1.This is Universal Belted Enhanced Child Restraint System. It is approved according to UN Regulation No. 129, for use primarily in, "Universal seating positions" as indicated by vehicle manufacturers in the vehicle user's manual.

2.If in doubt, consult either the Enhanced Child Restraint System manufacturer or the retailer.

Only suitable for use in the listed vehicles fitted with 3 point belt which is approved to ECE Regulation NO.16.

#### **WARNING!**

DO not use them in seating positions where there is active airbag installed.

Babymore  
Unit C2, Zenith Industrial Estate, Paycocke Road Basildon, Essex, SS14 3DW.  
Telephone: +44 (0)20 3475 5588  
Email: [customerservices@babymore.co.uk](mailto:customerservices@babymore.co.uk)  
[www.babymore.co.uk](http://www.babymore.co.uk)

**Babymore**  
more for your baby

## Pecan i-Size Baby Car Seat USER MANUAL



*ECE R129/03,  
40-87cm (≤13kg)*

Approved under European ECE R129/03  
Manufactured in accordance with ISO9001:2015 quality management system standards

## Contents

1. Applicability.....	3
2. Safety instructions.....	4
3. Parts and interior equipment.....	5
4. General use.....	6
4.1. Adjusting the carrying handle.....	6
5. Installation in car.....	7
6. Correct securing your baby.....	8
6.1. Setting the shoulder belt height.....	8
6.2. Adjust the shoulder straps.....	9
6.3. Securing the baby with the harness.....	9
6.4. The use of buckle.....	10
7. Care and Maintenance.....	11
7.1. Remove the fabric cover.....	11
7.2. Cleaning of the fabric cover.....	11
7.3. Care and Maintenance.....	11
8. What to do after an accident.....	11

## NOTES

The following brief instructions are intended to provide only an overview. In order to achieve maximum security and comfort for your child it is absolutely imperative that you read the whole instruction manual carefully. Order of tasks: set up infant car seat-strap the child in- install infant car seat in the vehicle.

### 1. Applicability

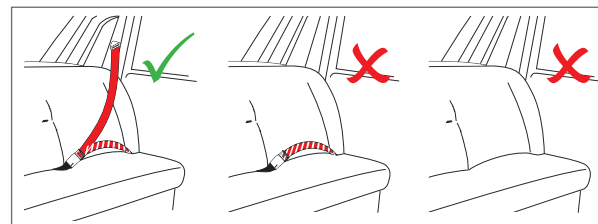
**Stature: 40- 87cm**

**Mass limit: ≤13kg**



**DO NOT** put the baby car seat on seats on which a front airbag is activated.

- Only suitable for vehicle seats with a three point automatic belt, approved under ECE regulation no R.16 or equivalent standard.



## 2. Safety instructions

**Note!** If the infant car seat is placed on the vehicle seat in a way that is not stable or at too steep an angle, it can be adjusted with an additional blanket.

**WARNING!** Do not use the infant car seat on a seat on which a front airbag is activated. This does not apply to so-called side airbags.

**Note!** The large-volume front airbag expands explosively and may cause your child serious injury or even death.

**WARNING!** The infant car seat only offers the best possible protection when exactly following the instructions given in this manual.

**WARNING!** The infant car seat only offers the best possible protection when exactly following the instructions given in this manual.

**WARNING!** No modifications or additions may be made to the YKO-706 without the approval of manufacturer. Repairs may only be undertaken by persons who have been authorized to do so. In doing so, they must always use original components and accessory parts only. If not, the infant car seat's protective function is no longer guaranteed.

**WARNING!** NEVER hold a baby on your lap in a car. The forces released in a collision are way too high for any person to hold on to the baby. Never secure yourself and the child with only one seatbelt.

The rigid items and plastic parts of an ECRS must be so located and installed that they are not liable, during everyday use of the vehicle, to become trapped by a movable seat or in a door of the vehicle.

The device should be replaced when it has been subject to violent stresses in an accident.

The chair should be kept away from sunlight, otherwise it may be too hot for the child's skin.

Any luggage or other objects liable to cause injuries in the event of a collision shall be properly secured.

**WARNING!** Please never leave your child unattended in a vehicle.

**WARNING!** Please ensure that any straps holding the restraint to the vehicle is tight and the straps restraining the child are adjusted to the child's body. Any straps should not be twisted.

**WARNING!** Any luggage or other objects liable to cause injuries in the event of a collision must be properly secured.

**WARNING!** NEVER leave your child alone or unattended in the child restraint system.

**WARNING!** Always keep this manual together with the infant carrier for future reference.

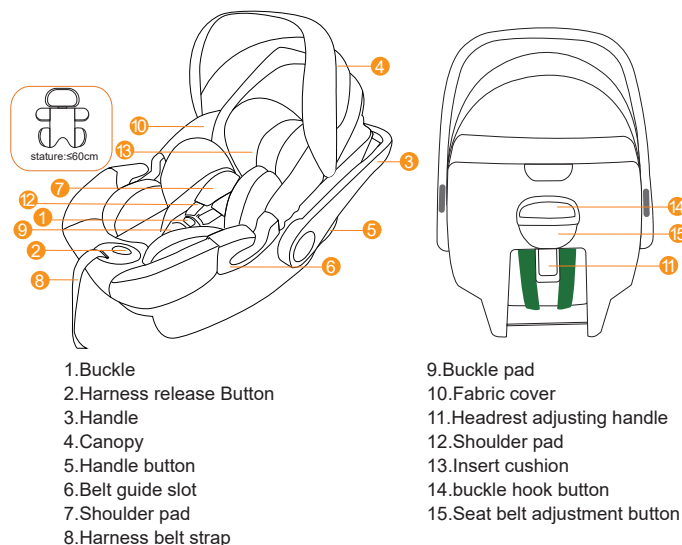
**WARNING!** Do not use the infant car seat on a seat with an activated front seat airbag. This does not apply to so-called side airbags.

- all unsecured objects in the vehicle are secured.
- all persons in the vehicle are strapped in.

**WARNING!** The vehicle belt buckle must under no circumstances reach into the lower lap belt guide. If the belt stalk is too long, the infant car seat is not suitable for use in this position in the vehicle. In case of doubt, please contact the manufacturer of your vehicle.

**WARNING!** The infant car seat must always be secured with the vehicle seatbelt, even when not being used. In the event of an emergency stop or a minor collision, an unsecured infant car seat can injure other passengers and yourself.

## 3. Parts and interior equipment.



## 4.General use

### 4.1.Adjusting the carrying handle

- You can lock the carrying handle into 4 positions.
- To adjust the carrying handle, please simultaneously press the red button on both sides.
- Then rotate the carrying handle until it automatically locks in the place in the desired position.

**WARNING!** Always strap your child in with the integrated belt system.

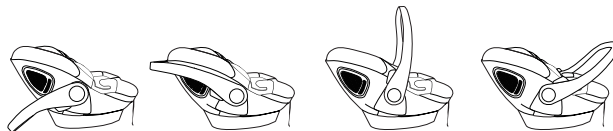


Fig.1

Fig.2

Fig.3

Fig.4

**Fig. 1:** Vehicle and carrying position, Place the infant car seat facing the rear of the vehicle on the vehicle seat (the child's feet point towards to the backrest of the vehicle seat).

**Fig. 2:** Straight up for carrying.

**Fig.3:** Handle clicked back to initiate the rocking feature.

**Fig.4:** Handle clicked down for upright sitting position, for putting baby inside.

- Always strap your child in with the integrated belt system and make sure the handle is locked in right position.

## 5.Installation in car

- Please read the instruction manuals in order to protect all passengers.
- Do not put this infant car seat on a seat with activated front airbag.
- The infant car seat can be suitable for vehicle seats with a three point automatic belt.
- The infant baby car seat must be installed rearward facing( the child's feet point towards to the backrest of the vehicle seat).



Fig.1



Fig.2



Fig.3



Fig.4

**Step 1.** Ensure the carrying handle in the forward position.

Put the infant car seat in vehicle's seat ( Fig.1), put the infant car seat against the backrest of the vehicle seat.

**Step 2.** Slide the lap belt of the vehicle's 3-point seat belt through both lap belt guides. Let the tongue plate snap in the belt lock with a clearly audible "click". Pull the shoulder belt in narrow direction to tighten the lap belt. Check to make sure the tongue plate is locked by pulling on the belt (Fig.2).

**Step3.** Place the diagonal belt in the diagonal belt guide at the back of the seat . rotate the handle of the seat to the appropriate place in the car. (Hearing "click") Be sure the handle has been locked and it should be firmly against the backrest of vehicle's seat (Fig.3).

**Step 4.** Tighten the vehicle's own 3-point seat belt by pulling hard on the positions showed in fig.4.

- **Attention:**The handle of the seat must be firmly installed against the backrest of car seat.
- You can release the child if you act the above steps in reversal ways.
- Make sure all the belts' position is right and not been twisted. Also check that the cover is not impeding the movement or fit of the belt webbing in any way.
- The satisfactory position of the adult safety-belt buckle relative to the child car seat is incorrect as the Fig 6. Fig.7 You can contact the child car seat manufacturer if in doubt about this point.



Fig.6

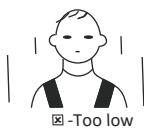


Fig.7

## 6. Correct securing your baby

### 6.1. Setting the shoulder belt height

Check whether the shoulder belts be at the right height for your child. The should belts should be at shoulder height or just above.



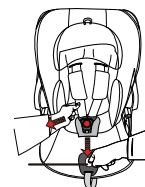
Height adjustment of the headrest and shoulder strap: Pull up the headrest adjusting handle, the headrest and the shoulder strap move up synchronously.

Press down the headrest adjusting handle and move the headrest down synchronously with the shoulder strap.

**Caution!** Please loosen the seat safety belt before adjusting the height of the headrest. Loosen the shoulder harness (see point 6.2)



### 6.2. Adjust the shoulder straps



- The shoulder straps are slackened by pressing the lever (under the seat cover) on the front of the seat.
- Press down the seat belt adjustment button as you grip the two shoulder straps with your other hand. Pull the shoulder straps towards you to loosen it.

### 6.3. Securing the baby with the harness

1. Firstly, adjust the shoulder straps height (see point 6.1), proceed as follows.
2. Loosen the harness (see point 6.2), open the buckle, and place them down sideways. Put your child in the child car seat. Place both shoulder straps over your child's shoulders.
3. Lock the buckle tightly.
4. Ensure that the straps are close to the shoulder of the child by pulling the straps tightly.



- The harness should be adjusted as tightly as possible without causing discomfort to your child.
- It is dangerous not to tighten the straps. Check the adjuster and be sure that the straps are pulled tightly, not twisted after installation every time.

#### 6.4. The use of buckle

1. Put the two metal sections of the buckle connectors together (fig.1)
2. Slot the two buckle connectors into the slot in the top of the buckle until hearing "click" (fig.2)
3. Check the harness is correctly locked by pulling the shoulder straps upwards (fig.3).
4. To release the harness, press the red button on the buckle downwards.

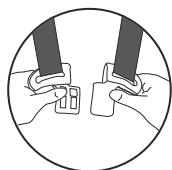


Fig.1

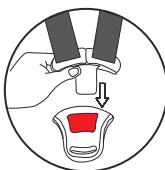


Fig.2

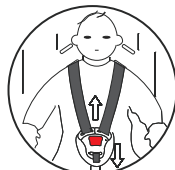


Fig.3

#### 7. Care and Maintenance

##### 7.1. Remove the fabric cover

**Step 1:** First pull out the harness from the seat.

**Step 2:** Undo the press button on the handle, then remove the canopy from backwards.

**Step 3:** Loosen the elastic, remove the fabric cover from upwards

• **Follow the steps described above but in reverse order in order to re-fasten the cover.**

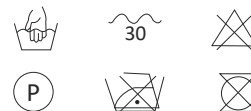
##### 7.2 Cleaning of the fabric cover

Use only neutral detergent and warm water to wash the fabric cover. Do not wash it by machine, spin-dry or tumble-dry are not recommended.

**WARNING!** Never use harsh cleaning or bleaching agents!

**WARNING!** The belt system cannot be dismantled! Never remove individual parts of the belt system! You can clean the belts with a clean cloth and some lukewarm soapy water. Try to avoid getting the belts too wet.

THIS COVER SHOULD BE HAND WASH



##### 7.3. Care and Maintenance

1. Please regularly check the function and spare parts of the baby car seat are in good condition to provide the maximum protection
2. Before using, please check the locking fastness of the buckle by pulling in effort the straps and see whether the buckle is loose or not.
3. Do not use the baby car seat in cold, wet or hot circumstance for a long time

##### 8. What to do after an accident

Please change the seat without fail after an accident